



24 Ritchie Street Norville QLD

If you are in the market for a new commercial space to move your business into then this is for you. A rear opportunity to secure a great tenancy in a prime area of Bundaberg. After long term tenants have moved out the space is now looking for a new start.

Some of the features of this tenancy include but are not limited too.

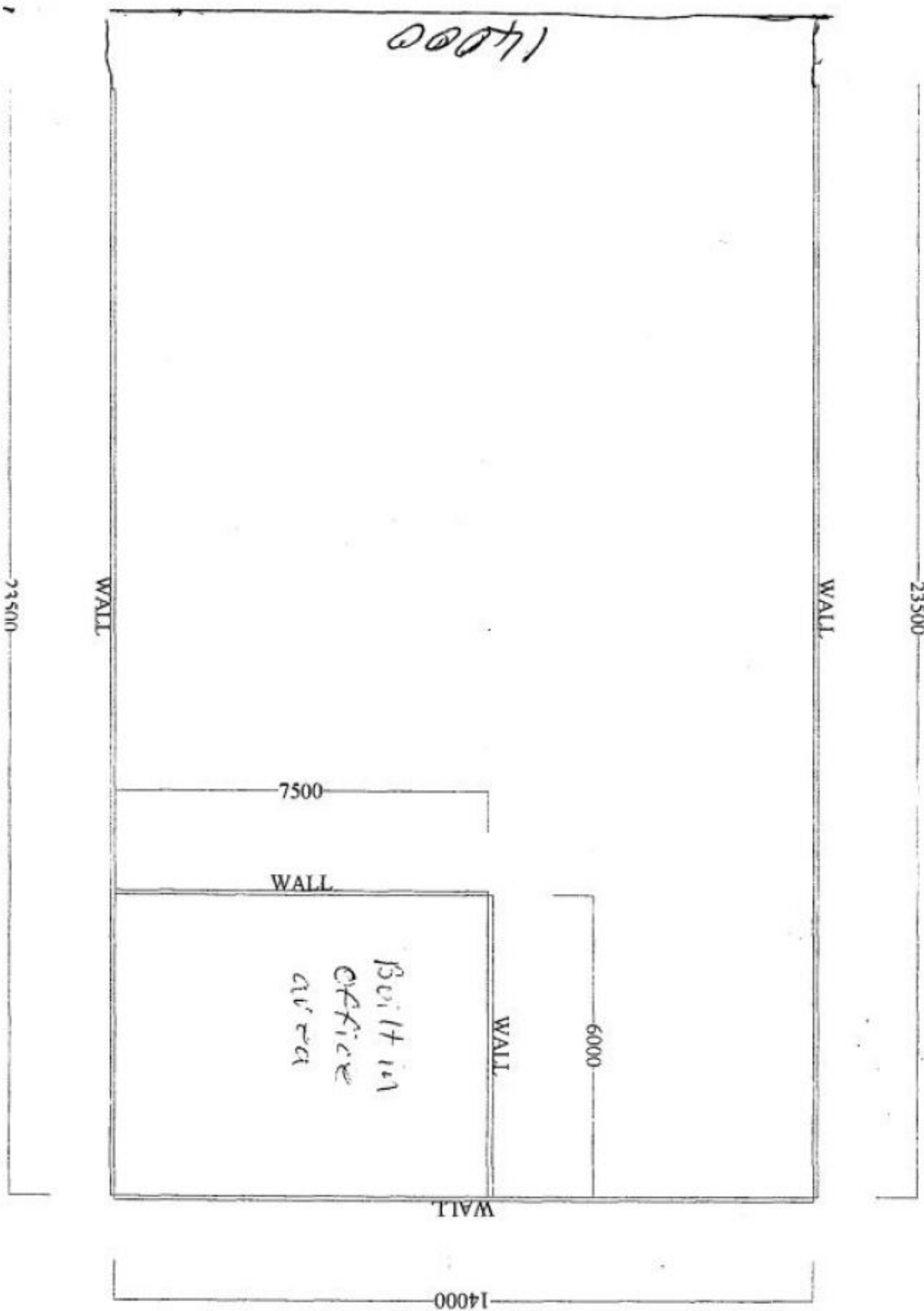
- 369m2 under lock up
- 329m2 Shed with a built in 45m2 Office
- Approx. 100m2 under cover
- Multiple entry ways into the tenancy
- Three phase power
- Front office area with display room
- Kitchenette
- Toilet

Price	: \$42,000 PA + GST
Building Size	: 329 sqm
Land Size	: 809 sqm
View	: https://www.justuscommercial.au/75836



Amy Beddow
07 4196 0933

— HOLLINGS WAY RD —



— Ritchie St —